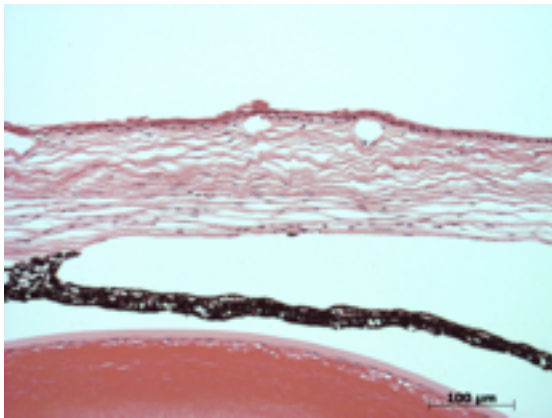


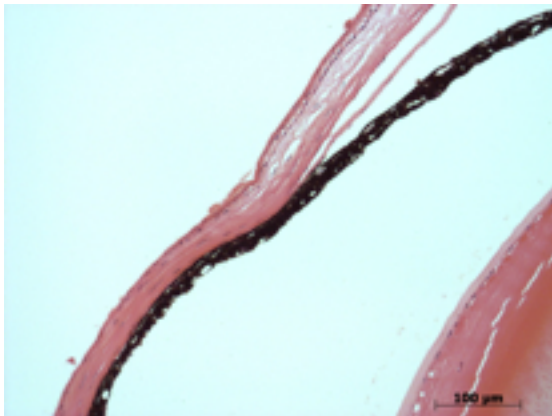
**Abnormal Findings:** Two out of six eyes showed subretinal RPE cells (MP:0005549), corneal stroma spaces (MP:0005300); in one eye there was a thin ciliary body and iris synechia (MP:0004222) and vitreous opacities (MP:0002700).

## EYE Phenotype



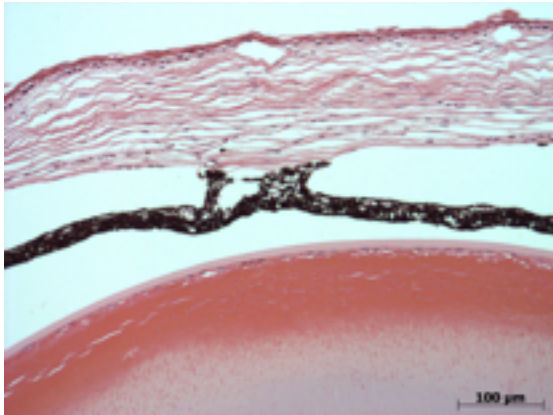
### Cornea:

**2/6.** The corneal epithelium varies in thickness, stroma shows large spaces just beneath the epithelium, and endothelium. There is a tissue fragment on the epithelial surface (nonspecific).



### Anterior chamber:

**1/6.** The anterior chamber was shallow, but without cells, and the angle was closed open.



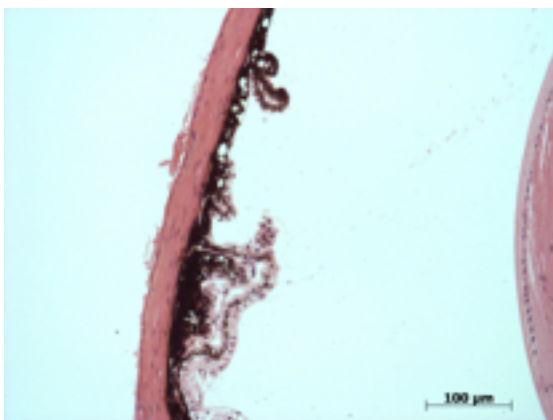
**Iris:**

**1/6.** There are iris synechia to the cornea. Otherwise it showed normal pigmentation without rubeosis or pupillary membranes.



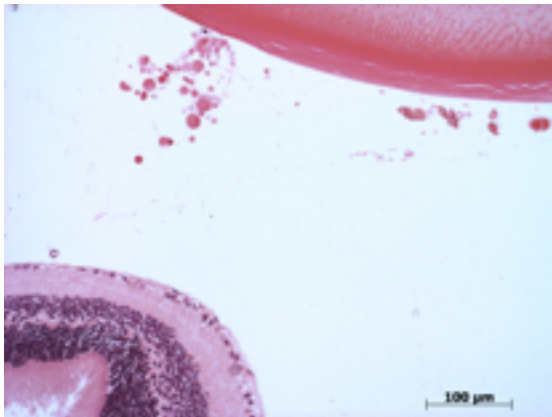
**Lens:**

**6/6.** No cataract was observed.



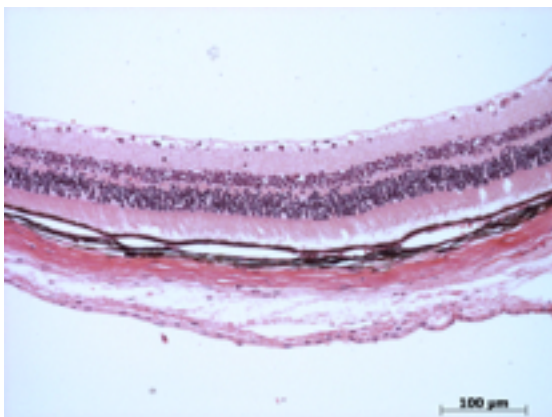
**Ciliary body:**

**1/6.** The ciliary body is thin with blunted cilia.



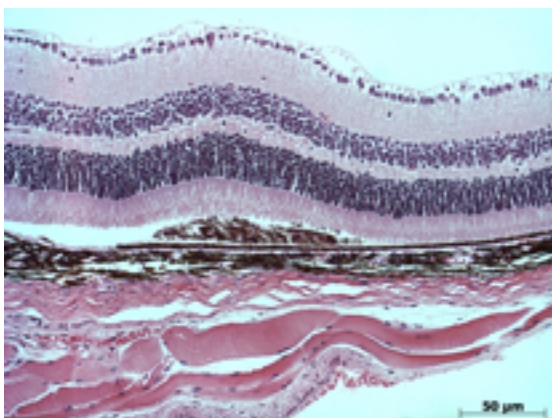
**Vitreous:**

**1/6.** Vitreous opacities.



**Retina:**

**6/6.** The retinal ganglion, inner nuclear and photoreceptor layers are normal.



**Retinal pigment epithelium and Choroid:**

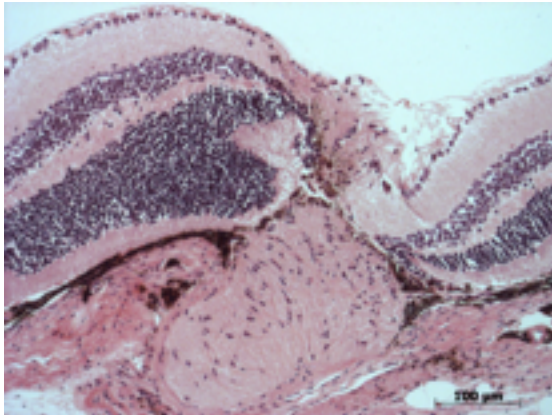
**2/6.** There are clumps of RPE cells beneath the retina. Bruch's membrane is intact. No neovascular membranes were noted.

Gene: **Gsk3a**

Genotype -/-

Sanger Colony: MCCU

---



**Optic Nerve:**

**6/6.** The nerve is normal.

**Methods.** 6 eyes from 3 male mice were enucleated by blunt dissection and fixed. Pupil-optic nerve sections were processed with hematoxylin and eosin, and standard images were captured under light microscopy for review.